



**the Cutting Edge®**  
media evaluation software



## *The Cutting Edge v3.5 Network Edition*

### *Cutting Edge Network Features*

- **Multi-user**
- **Peer-to-peer networking**
- **Cross-platform compatibility**
- **Automatic record locking**
- **Access to all Full Edition features**

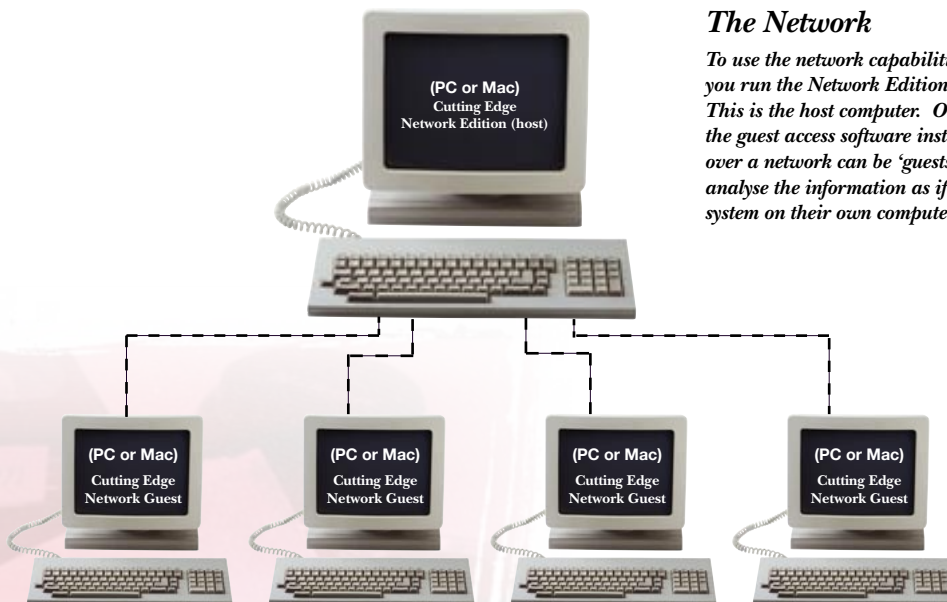
The Cutting Edge Network Edition delivers an outstanding solution where a small number of users need access to the same cuttings information.

The Cutting Edge Full Edition is turned into a multi-user system. This enables you to share information seamlessly between computers over your network, even between Windows and Mac OS versions of the Cutting Edge.

The main Cutting Edge user's computer becomes the host. There is no need for expensive server hardware. Each additional user license allows another computer to access the system as a guest.

You can have some people entering cuttings details and others analysing the data, even at the same time. The system looks after the integrity of your data by preventing two people from changing the same information simultaneously.

To take advantage of server hardware or for groups of 5 or more, you may want to take a look at the Server Edition. This is high performance server software that efficiently delivers the Cutting Edge to up to 250 users.

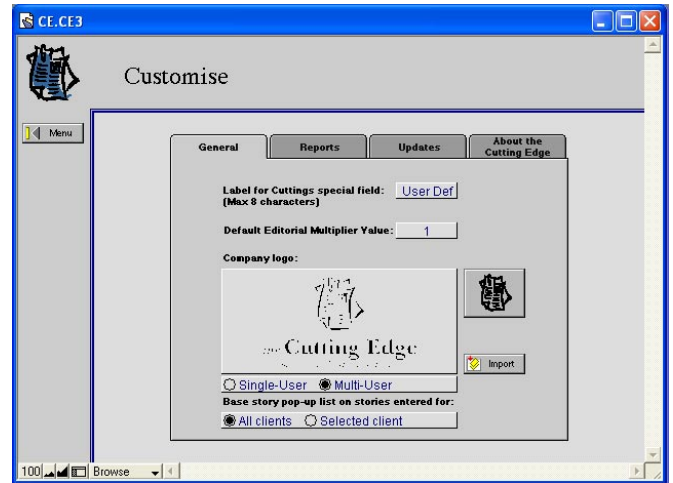


### *The Network*

*To use the network capabilities of the Cutting Edge, you run the Network Edition on a central computer. This is the host computer. Other computers with the guest access software installed and connected over a network can be 'guests'. They can edit and analyse the information as if they had the full system on their own computer.*

Features	Benefits
<i>Up to 10* simultaneous users</i>	Everyone has immediate access to the latest cutting information.
<i>Automatic record locking</i>	Maintains the integrity of your data by preventing two people from changing the same information at the same time.
<i>Cross-platform compatibility</i>	Allows Windows and Mac OS computers connected to the same network to share the Cutting Edge.
<i>Access all Full Edition features</i>	Allows each member of the team to work as if they have the Full Edition on their computer.

\* maximum number of users can be increased to 250 with the Cutting Edge Server Edition.



The Cutting Edge Full Edition can be turned into multi-user mode with a click of a button

The Cutting Edge Range	
<b>Cutting Edge Lite</b>	The ideal starter package. A single-user system that gives you a sound evaluation of your media coverage but without the in-depth analyses of the Full Edition.
<b>The Cutting Edge Full Edition</b>	Sophisticated analyses of your media coverage. All the features of Cutting Edge Lite plus many more analyses & other power features.
<b>Cutting Edge Network Edition</b>	Peer-to-peer networking to allow up to 10 users to access the Cutting Edge simultaneously.
<b>Cutting Edge Server Edition</b>	Robust client-server networking allowing up to 250 simultaneous users and automated backups.

FOR WINDOWS	FOR MACINTOSH OS
<b>Minimum Requirements</b>	<b>Minimum Requirements</b>
<ul style="list-style-type: none"> <li>Intel compatible Pentium 90 or higher</li> <li>32Mb RAM</li> <li>Hard disk drive</li> <li>Windows 98, ME, NT4.0 (SP6), 2000, XP</li> <li>CD-ROM drive to install the software</li> <li>Microsoft TCP/IP or IPX/SPX network</li> </ul>	<ul style="list-style-type: none"> <li>Power Macintosh computer or higher (G3 or higher for OS X)</li> <li>Mac OS 8.6 through 9.2.2 or OS X 10.1 or higher</li> <li>32 Mb RAM (128 Mb for OS X)</li> <li>Hard disk drive</li> <li>CD-ROM drive to install the software</li> <li>TCP/IP network (OS X)</li> <li>TCP/IP or AppleTalk network (Mac OS)</li> </ul>

To get your free demo disk or talk to one of our consultants:

**Call: 0845 838 2292**

email: [info@cuttingedge.uk.com](mailto:info@cuttingedge.uk.com)

Web site: [www.cuttingedge.uk.com](http://www.cuttingedge.uk.com)



**CUTTING EDGE**  
SOFTWARE